



ATLANTIC VIEW



ATLANTIC VIEW AT WRIGHTSVILLE BEACH

ATLANTIC VIEW

The Palmetto

Unit A (2nd Floor)
Square Footage:
1,461' Heated Square Feet

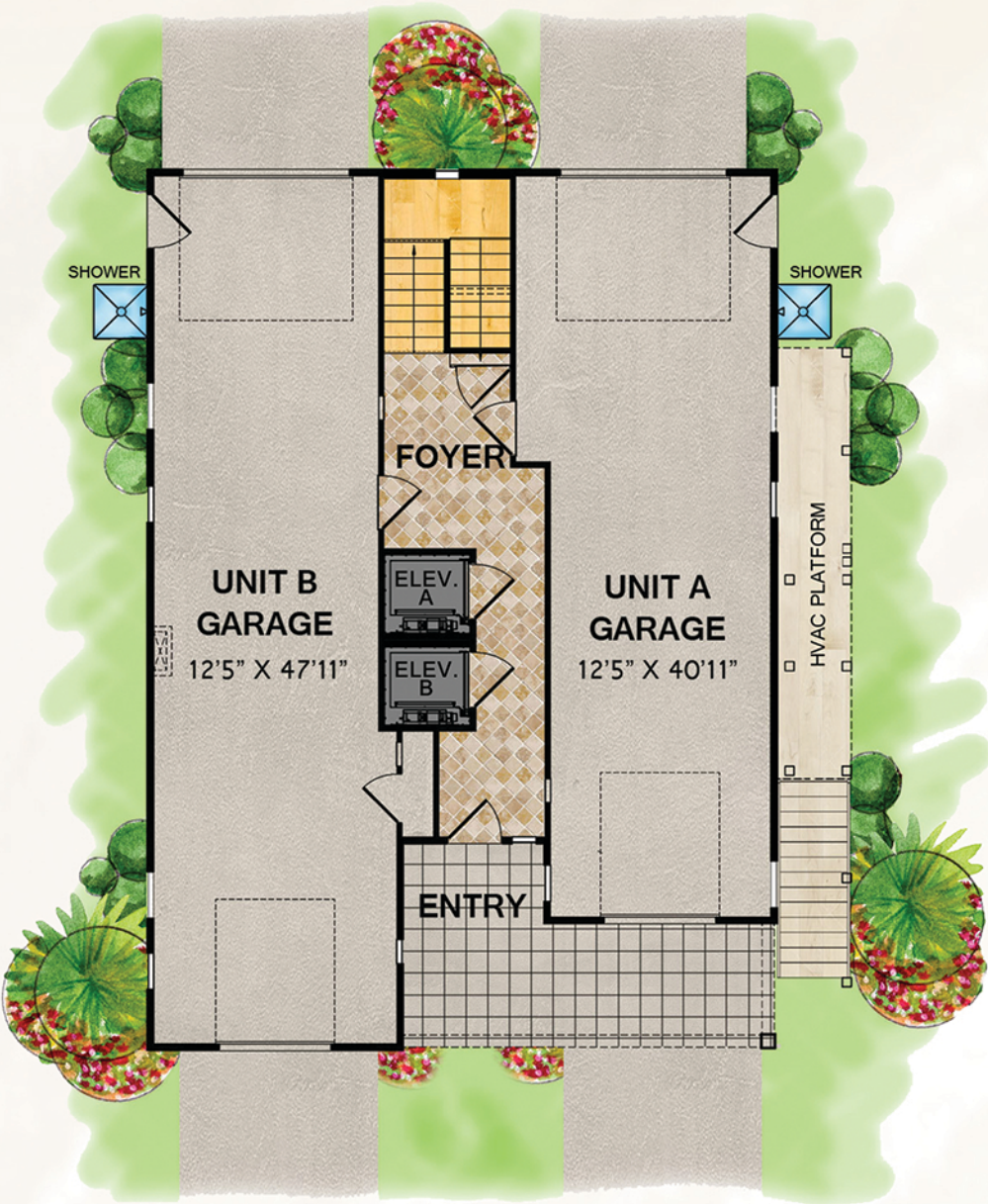
Unit B (3rd Floor)
Square Footage:
1,486' Heated Square Feet

Common Area
Square Footage:
662 Heated Square Feet

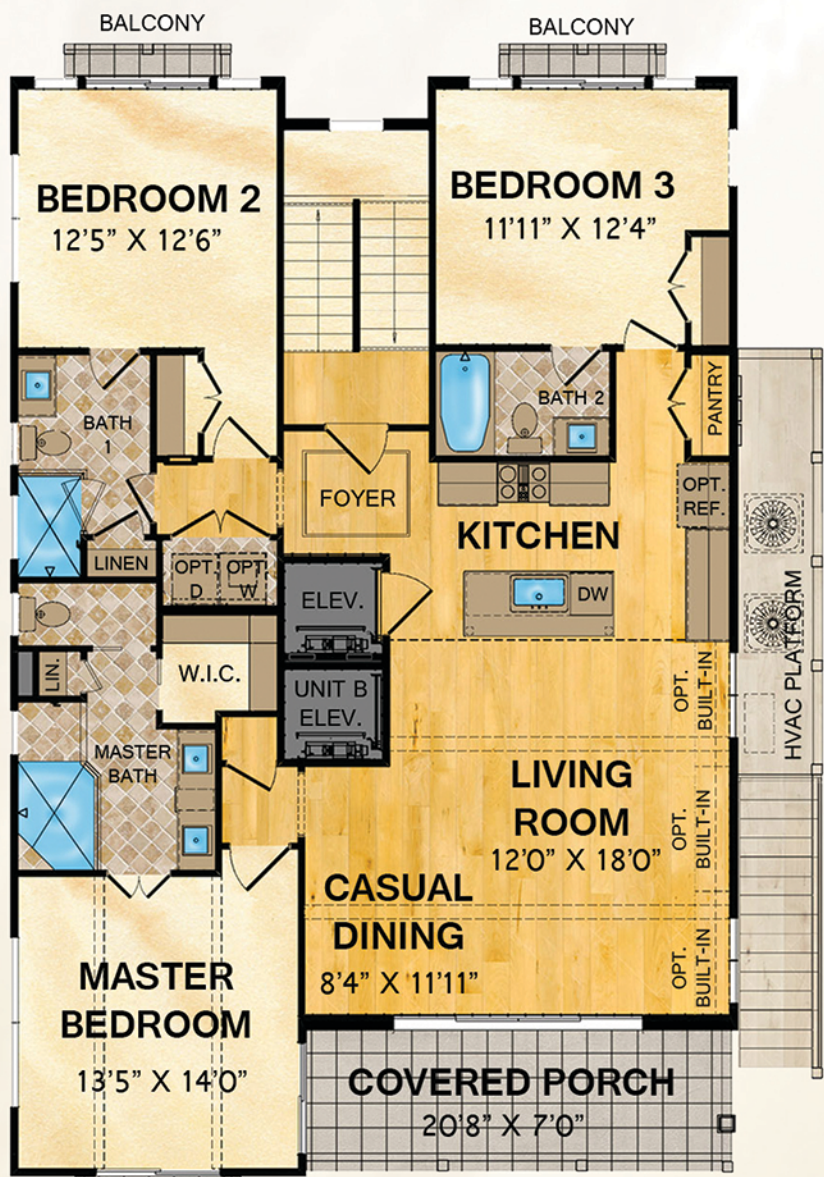
FOR MORE INFORMATION CONTACT



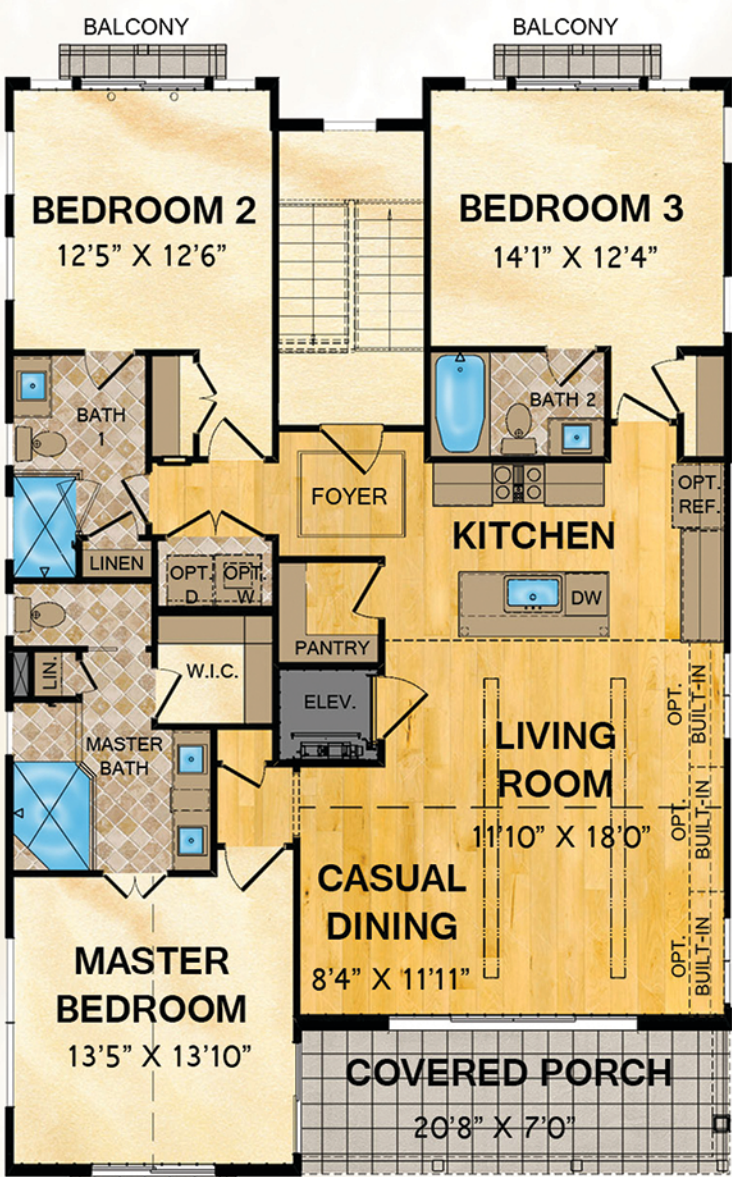
EVAN BARTON
AT 910.547.4594
OR
MAX SMITH
AT 910.398.3935



FIRST FLOOR



SECOND FLOOR
UNIT A



THIRD FLOOR
UNIT B



Void where prohibited. All copy, plans, and artwork contained in or represented by this brochure and its enclosures are the sole property of Logan Homes. Photos and renderings are images only and should not be relied upon to confirm applicable features. Some items pictured may be optional and at an additional cost. Options to be included in your home will be specified in your contract. Room dimensions are approximate. Floor plans and elevations are subject to change without notice, and any reproduction of them or other use without the written permission of Logan Homes is strictly prohibited. Updated 1-14-19 ©2019 Logan Homes

ELEVATION OPTIONS:



COASTAL ELEVATION



CRAFTSMAN ELEVATION



TRADITIONAL ELEVATION



FOR MORE INFORMATION CONTACT



EVAN BARTON
AT 910.547.4594
OR
MAX SMITH
AT 910.398.3935



Void where prohibited. All copy, plans, and artwork contained in or represented by this brochure and its enclosures are the sole property of Logan Homes. Photos and renderings are images only and should not be relied upon to confirm applicable features. Some items pictured may be optional and at an additional cost. Options to be included in your home will be specified in your contract. Room dimensions are approximate. Floor plans and elevations are subject to change without notice, and any reproduction of them or other use without the written permission of Logan Homes is strictly prohibited. Updated 1-14-19 ©2019 Logan Homes.